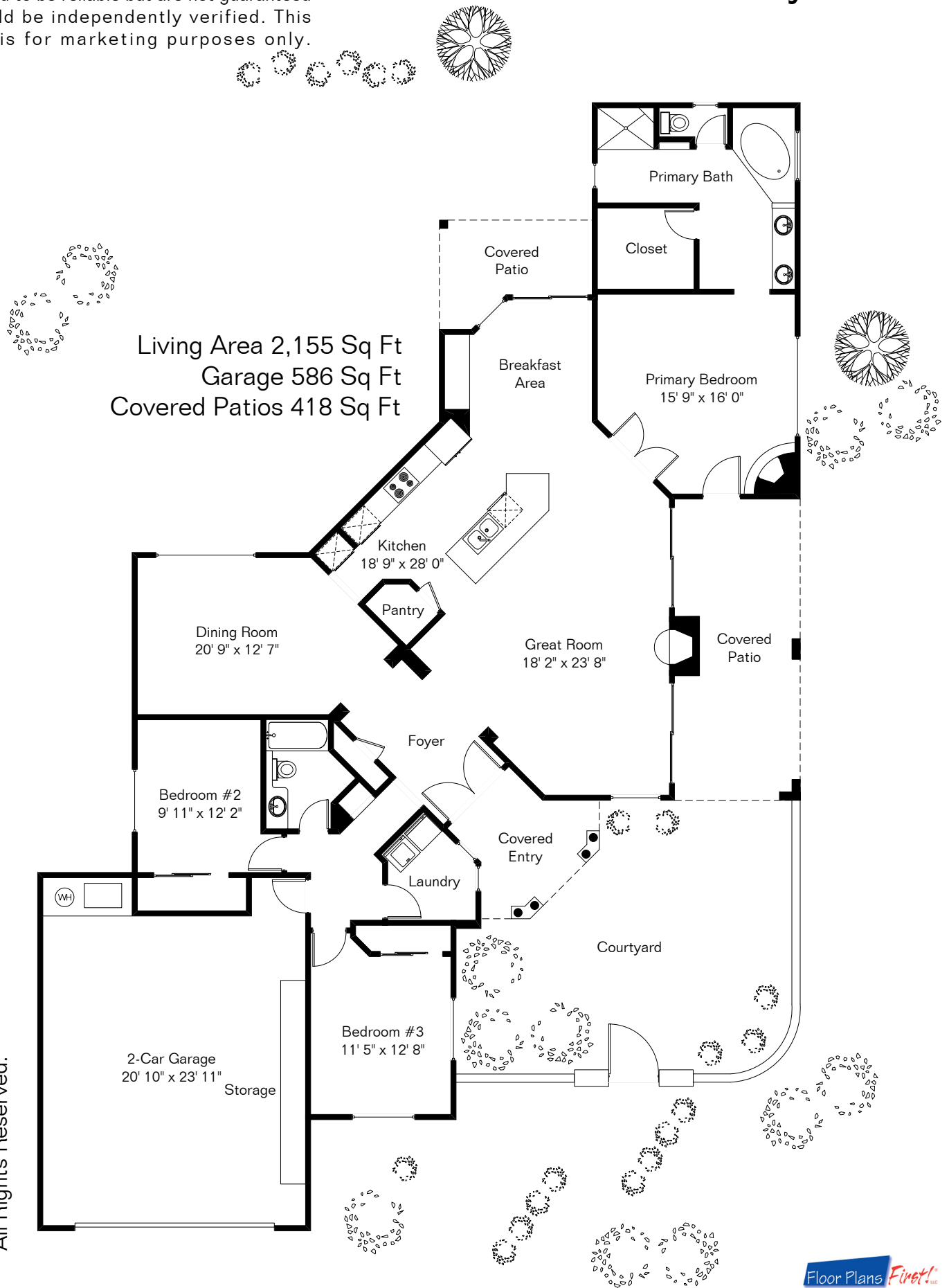


The square footages and room size information are deemed to be reliable but are not guaranteed and should be independently verified. This drawing is for marketing purposes only.

# 4921 W McElroy Dr



Living Area 2,155 Sq Ft  
Garage 586 Sq Ft  
Covered Patios 418 Sq Ft

Site Visit May 2024  
0 ft. 6 ft. 10 ft. 20 ft.  
Floor Plans First! LLC  
All Rights Reserved.